

Renovation during ongoing operations:

# Flooring from Silikal for Viennese Coffee House, an institution in Vienna



Expect more from your floor.



## New kitchen floor without interference in operations

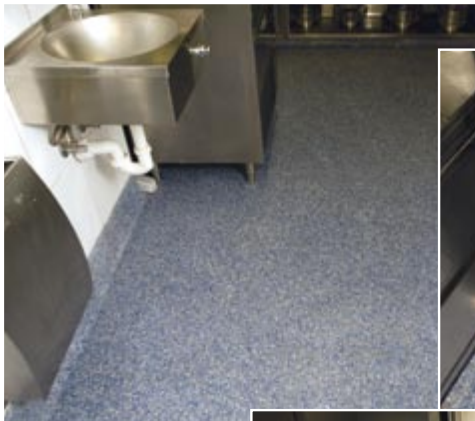
The famous Café Landtmann, a Viennese coffee house, is truly an institution. Everybody who is anybody comes here to be seen whether politician, manager or artist. Opened in 1873 the typical style of Vienna is cultivated here. In the background flooring from Silikal ensures hygiene and safety.

In the kitchen area and in storage areas, in hallways and technical rooms, in pantries and cooling areas a blue-grey flakes flooring emphasizes the prestigious image of the Café Landtmann. Durable and easy to clean, the new

seamless coatings are tried and tested day after day. As the base of a well tended workplace in the kitchen area, but also as a non-slip surface for the staff's lively workdays.

The fast realization of the renovation was also very impressive. There was no interruption in business, because the installation was done during the night. In just two days the floor was prepared and installed and was ready to be fully loaded again only one hour after the coating was applied.

**Silikal**  
made in Germany  
since 1951



*Skillfully applied by qualified installers and the new floor is fully cured and ready for action within one hour. A perfect way to keep your operation running wide open.*



**Expect more from your floor.**

**Silikal** GmbH

Reactive resins and polymer concrete for industrial floors and civil engineering projects

✉ Ostring 23  
D-63533 Mainhausen  
☎ +49 (0) 61 82 / 92 35 -0  
☎ +49 (0) 61 82 / 92 35 -40  
🌐 <http://www.silikal.de>  
@ [mail@silikal.de](mailto:mail@silikal.de)



Certified Quality and Ecology Management Systems  
Reg. No. 73 100 663/73 104 856

Certified according to AgBB evaluation scheme

*All details given above can only serve as general information. The various working conditions or circumstances beyond our control and the many different materials in use exclude any claim which might arise out of the information contained herein. In case of doubt, we recommend that you make sufficient trials on your own.*